

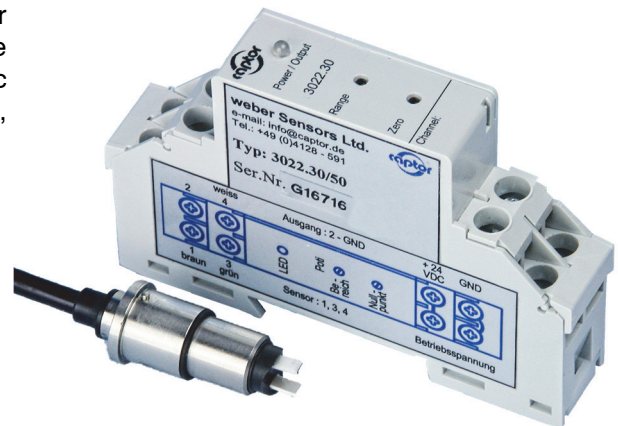
# Flow meter for gaseous media



## vent-captor system 3505 + 3022.30/xx

The **vent-captor** type 3505 + 3022.30 is a remote flow meter for industrial applications, ideal for small pipe sizes. The measurement of the mass flow bases on the calorimetric principle. The vent-captor is completely resin encapsulated, thus rugged, shock and vibration proof.

- Small pipe diameters
- **Standard ID 13 mm (ID 10 - ID 15)**
- For air and other gaseous media
- Ideally suited for low flow rates
- Temperature compensated
- Compact, no additional parts
- Linear current output 4 -20 mA
- LED for range control
- Rugged industrial version
- **ISO 9001:2015**



Technical Data				
Typ	3505 + 3022.30/xx			
Medium	gaseous (agressive media on request)			
Sensor Data *1				
Measuring range	0 - 10 m/s	0 - 20 m/s	0 - 30 m/s	0 - 50 m/s
Measuring at ID 13 mm	0 - 80 l/m	0 - 160 l/m	0 - 240 l/m	0 - 400 l/m
Measuring range adjustment	continually adjustable from 20 % to 100 % of the specified measuring range 2 potentiometers ( zero point, range )			
Linearity deviation	< 3% best fitting slope			
Repeatability tolerance	< 1%			
Temperature drift	< 0,3% / K			
Medium temperature	-20 °C to +70 °C			
Ambient temperature	-20 °C to +70 °C			
Pressure (3505)	max 16 bar			
Mechanical Data				
Protection class	IP 65			
Material	<b>Sensor probe</b> Ceramic, Platinum with overglaze	<b>Sensor holding</b> PET	<b>Sensor housing</b> stainl. steel WN 1.4571 AISI 316Ti	<b>Electronic housing</b> Makrolon®
Sensor connection	moulded oilflexcable / 3 x 0,5 mm <sup>2</sup> , length 65 cm			
Housing dimension and connection diagram	see back page			
Electrical data				
Operating voltage	24 V DC ±10%			
Current consumption	4,3W - 5,3W (max. flow)			
Output current	4 - 20 mA			
Load	0 - 600Ω			

\*1 All data for medium air with normal atmospheric pressure

**weber**

Sensors GmbH Strohdeich 32  
Sensors Ltd. 66 Eastbourne Road, Southport  
Sensors LLC. 4462 Bretton Court, Building 1, Suite 7

DE-25377 Kollmar, Germany Tel.: +49 (0)4128 - 591 · Fax: - 593  
Merseyside PR8 4DU, UK Tel.: +44 (1704) - 551684 · Fax: - 551297  
Acworth, Georgia 30101, USA Tel.: +1 (770) 592 - 6630 · Fax: - 592 6640

**www.captor.de**  
info@captor.de  
sales@captor.co.uk  
sales@captor.com

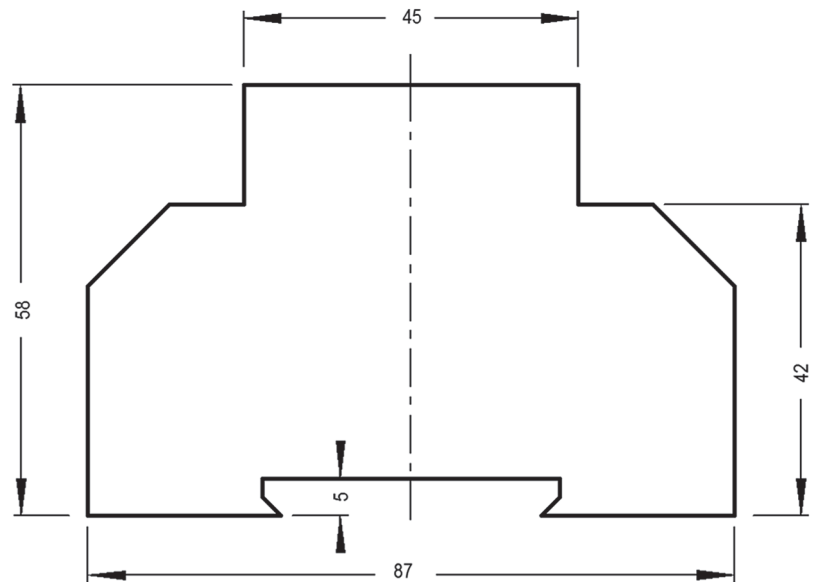
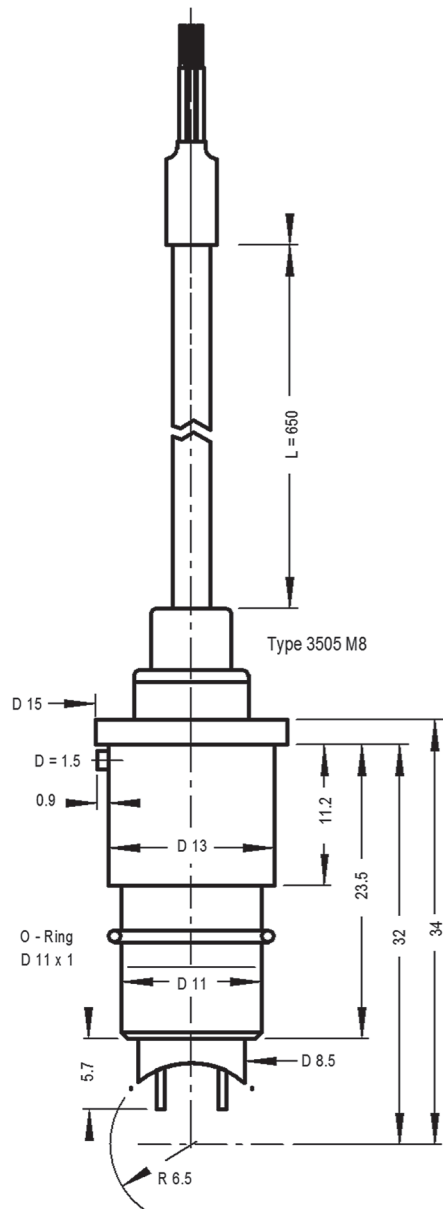
Technical data subject to alteration! Rev. AL 13.01.22

# Flow meter for gaseous media



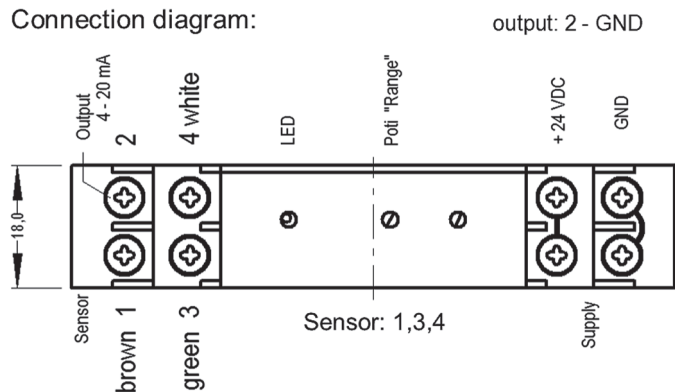
## vent-captor system 3505 + 3022.30/xx

Dimensions:



dimensions (HxLxD): 58x87x18 mm

Connection diagram:



**weber**

Sensors GmbH Strohdreich 32  
Sensors Ltd. 66 Eastbourne Road, Southport  
Sensors LLC. 4462 Bretton Court, Building 1, Suite 7

DE-25377 Kollmar, Germany Tel.: +49 (0)4128 - 591 · Fax: - 593  
Merseyside PR8 4DU, UK Tel.: +44 (1704) - 551684 · Fax: - 551297  
Acworth, Georgia 30101, USA Tel.: +1 (770) 592 - 6630 · Fax: - 592 6640

**www.captor.de**  
info@captor.de

sales@captor.co.uk  
sales@captor.com

Technical data subject to alteration! Rev. AL 13.01.22