

# Sea Recovery Aqua Matic

Mid to Mega Yachts  
(40 - over 80 ft / 12 - over 24 m)



## Tomorrow's Technology, Here Today

The Aqua Matic watermaker features automatic operation with a touchscreen control panel that allows simple touch-and-go operations. Product water quality is now displayed in a bar graph format. Regulation and monitor systems function without the need of an operator. Sea Recovery's high-pressure design includes double O-ring seals on duplex stainless steel fittings to ensure leak-proof operation.



Aqua Matic - compact

## Contact Information:

Parker Hannifin Corporation  
**Water Purification**  
2630 E. El Presidio Street  
Carson, CA 90810

**phone 310 608 5600**

**fax 310 608 5692**

**[www.parker.com/waterpurification](http://www.parker.com/waterpurification)**

### Sales & Customer Support:

[bwf.car.support@support.parker.com](mailto:bwf.car.support@support.parker.com)

### Technical Support:

[bwf.car.technical@support.parker.com](mailto:bwf.car.technical@support.parker.com)

## Features & Benefits:

- An automated screen informs the operator of required maintenance
- Available in a small footprint, compact frame for easy installation
- Full color, touchscreen remote control
- Ability to display in multiple languages



Touchscreen Controller



Aqua Matic - modular



ENGINEERING YOUR SUCCESS.

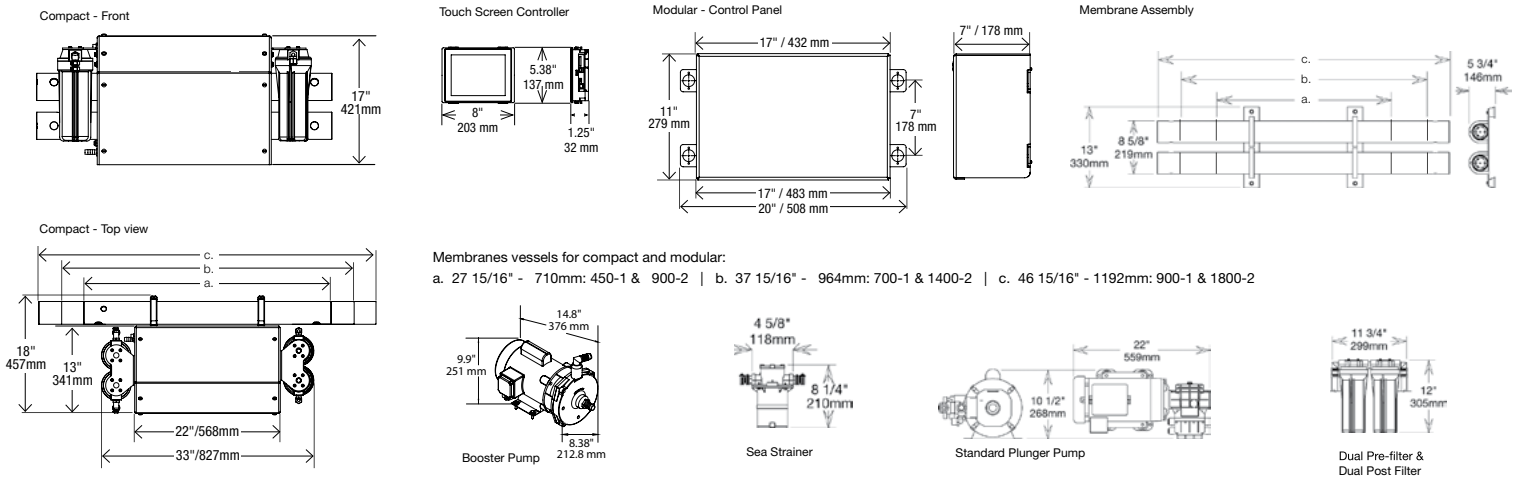
# Specifications

	Model #	Production / Hr.	Production / 24 hrs.	AQM Compact*	AQM Modular*
<b>Productions and Weight</b>	450-1	19 Gal / 71 L	450 Gal / 1,703 L	153 lbs / 69 kg	149 lbs / 68 kg
	700-1	29 Gal / 110 L	700 Gal / 2,650 L	156 lbs / 71 kg	152 lbs / 69 kg
	900-1	38 Gal / 142 L	900 Gal / 3,407 L	158 lbs / 72 kg	154 lbs / 70 kg
	900-2	38 Gal / 142 L	900 Gal / 3,407 L	165 lbs / 75 kg	161 lbs / 73 kg
	1400-2	58 Gal / 221 L	1,400 Gal / 5,300 L	171 lbs / 76 kg	167 lbs / 76 kg
	1800-2	75 Gal / 284 L	1,800 Gal / 6,814 L	176 lbs / 80 kg	172 lbs / 78 kg

ELECTRICAL	Phase	Pump Motor	Voltage VAC	Hz	NOA	SUC	Operating Voltage	Start Up Current
<b>Plunger Pump Radial Axial Pump</b>					<b>110 / 220</b>	<b>110 / 220</b>		
	Single	HP / Booster	110-115 / 220 -230	50 / 60	30 / 15	100 / 50	110-115 / 220-230	40 Ampere / 20 Ampere
	Single	HP / Booster	110-115 / 220 -230	50 / 60	35 / 17.5	100 / 55	110-115 / 220-230	45 Ampere / 25 Ampere
						<b>110 / 220</b>	<b>110 / 220</b>	
	Three	HP / Booster	220-230 / 380-460	50 / 60	11 / 5.5	30 / 15	220 / 380 / 460	15 Ampere / 10 Ampere / 10 Ampere
	Three	HP / Booster	220-230 / 380-460	50 / 60	11 / 5.5	30 / 15	220 / 380 / 460	15 Ampere / 10 Ampere / 10 Ampere

\*Production may vary +/-20% | GPD: Gallons per day • LPD: Liters per day

## Dimensions



To maintain peak performance, always use genuine Parker Sea Recovery and Village Marine the global leader in motion and control technologies, reverse osmosis water desalination, purification, and filtration units replacement parts. We reserve the right to change our specifications or standards without notice.

**WARNING:** This product can expose you to chemicals including Di(2-ethylhexyl) phthalate (DEHP), which is known to the state of California to cause cancer and birth defects or other reproductive harm. For more information go to [www.P65Warnings.ca.gov](http://www.P65Warnings.ca.gov).

