

## VEGAMET 625

### Controller and display instrument for level sensors



#### Application area

The VEGAMET 625 controller powers the connected 4 ... 20 mA/HART sensor, processes and displays the measured values received via HART multidrop. The VEGAMET 625 is ideal for simple control tasks in level, gauge, interface, differential and process pressure measurement. For inventory management in remote storage silos, interfaces for remote data transmission are integrated. Comprehensive adjustment functions allow individual adaptations to the respective application.

#### Your benefit

- Versatile use through three scalable current outputs for control of indicating instruments and connected systems such as e.g. PLCs
- Simple integration into the Intranet/Extranet via integrated web server
- Simple data recording and history retrieval via integrated measured value memory

#### Function

The VEGAMET 625 controller powers two HART sensors and processes their measured values. Through an adjustment on the VEGAMET, these measured values can be individually scaled/linearised and transferred to downstream systems via the current outputs. Beside the graphic-capable indication there are three operating relays that serve as limit alarms for control tasks.

Optional interfaces offer the possibility of remote enquiry of measured values. With the built-in webserver, the measured values can be made available in a network.

#### Approvals

Worldwide approvals are available for VEGA instruments, e.g. for use in hazardous areas, on ships or in hygienic applications.

The technical data in the respective safety instructions are valid for approved instruments (e.g. with Ex approval). In some cases, these data can differ from the data listed herein.

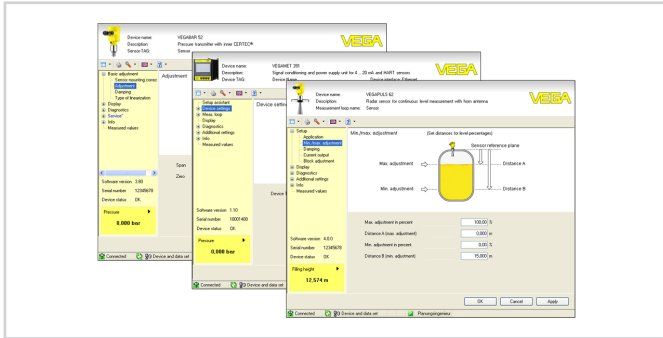
You can find detailed information on the existing approvals with the appropriate product on our homepage.

#### Technical data

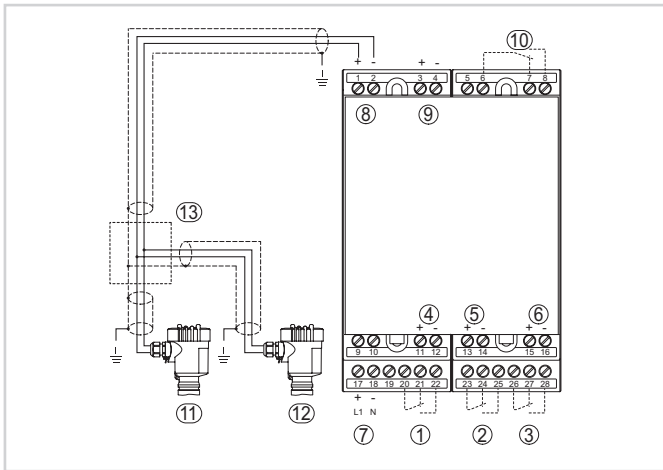
Series	Module unit with plug-in socket for mounting on carrier rail (35 x 7.5 according to DIN EN 50022/60715)
Connection terminals	
– Type of terminal	Screw terminal
– Max. wire cross-section	1.5 mm <sup>2</sup> (AWG 16)
Operating voltage	
– Nominal voltage AC	24 ... 230 V (-15 %, +10 %) 50/60 Hz
– Nominal voltage DC	24 ... 65 V (-15 %, +10 %)
Max. power consumption	12 VA; 7.5 W
<b>Sensor input</b>	
Number of sensors	2 x VEGA HART sensors
Type of input (selectable)	
– Active input	Sensor supply through VEGAMET 625
– Passive input	Sensor has an own voltage supply
Measured value transmission	
<b>Relay outputs</b>	
Quantity	3 x operating relay, 1 x fail safe relay
Switching voltage	min. 10 mV DC, max. 250 V AC/DC
Switching current	min. 10 µA DC, max. 3 A AC, 1 A DC
Breaking capacity	min. 50 mW, max. 750 VA, max. 40 W DC
<b>Current outputs</b>	
Quantity	3 x output
Range	0/4 ... 20 mA, 20 ... 0/4 mA
Max. load	500 Ω
<b>Ethernet interface (optional)</b>	
Quantity	1 x, cannot be combined with RS232
Data transmission	10/100 MBit
<b>RS232 interface (optional)</b>	
Quantity	1 x, cannot be combined with Ethernet
<b>Indicators</b>	
Measured value indication	
– Graphic-capable LC display, with lighting	50 x 25 mm, digital and quasianalogue display
LED displays	
– Status, operating voltage	1 x LED green
– Status, fault signal	1 x LED red
– Status operating relay 1/2/3	3 x LED yellow
– Status interface	1 x LED green
<b>Ambient conditions</b>	
Ambient temperature	-20 ... +60 °C (-4 ... +140 °F)
<b>Electrical protective measures</b>	
Protection rating	
– Instrument	IP 30
– Terminal socket	IP 20
Protection class	II

## Adjustment

The adjustment of VEGAMET 625 is menu-driven via four keys in the front and a clear, graphic-capable LC display with background lighting. As an alternative, parameter adjustment of the instrument is also possible via the adjustment software PACTware and the respective DTM.



## Electrical connection

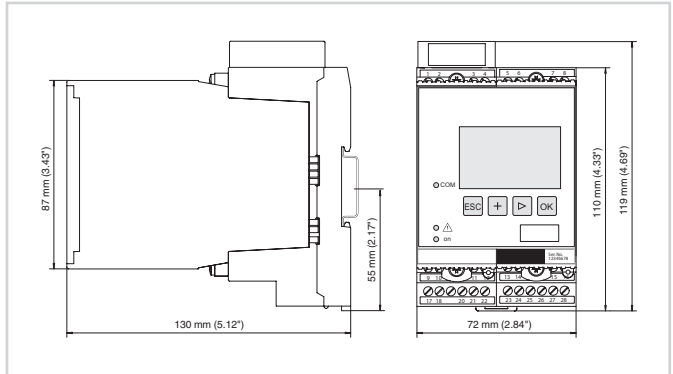


Connection VEGAMET 625 with two-wire sensors

- 1 Internal operating relay 1
- 2 Internal operating relay 2
- 3 Internal operating relay 3
- 4 Internal current output 1
- 5 Internal current output 2
- 6 Internal current output 3
- 7 Voltage supply of VEGAMET 625
- 8 Measurement data input with sensor supply (active input)
- 9 Measurement data input (passive input), not in Ex ia
- 10 Internal fail safe relay
- 11 HART two-wire sensor with Multidrop address 1
- 12 HART two-wire sensor with Multidrop address 2
- 13 Distributor

You can find details on electrical connection in the instrument operating instructions on our homepage at [www.vega.com/downloads](http://www.vega.com/downloads).

## Dimensions



## Information

You can find further information on the VEGA product line on our homepage.

In the download section on our homepage you'll find operating instructions, product information, brochures, approval documents, instrument drawings and much, much more.

Software accessories such as the current device software and the appropriate operating software are also available there.

## Contact

You can find your personal contact person at VEGA on our homepage under "Contact".